

RD244

Dana M200, Jeep JL Sport RR

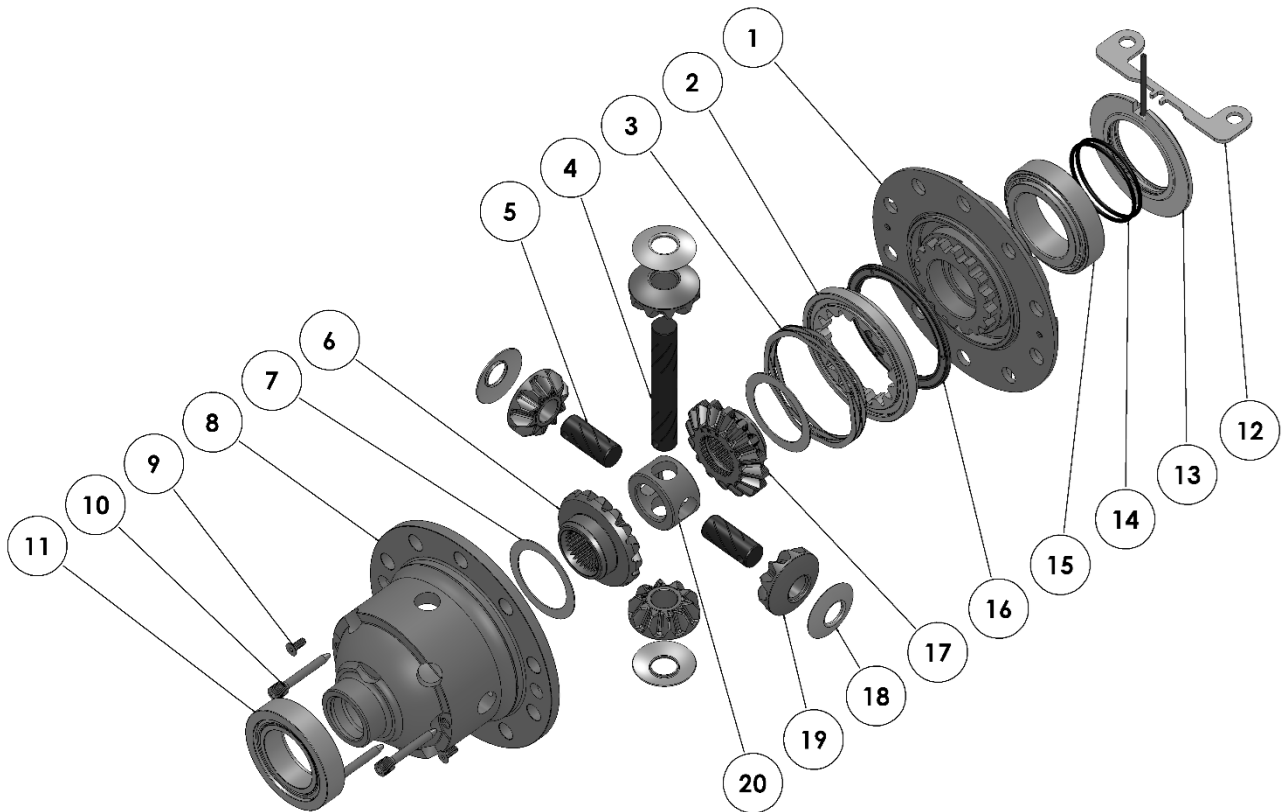
PARTS LIST

ITEM #	QTY	DESCRIPTION	PART #	NOTES
01	1	FLANGE CAP KIT	028525SP	
02	1	CLUTCH GEAR & WAVESPRING KIT	050902SP	
03	1	WAVESPRING	150702SP	
04	1	LONG CROSS SHAFT	061302SP	
05	2	SHORT CROSS SHAFT	061402SP	
06	1	SIDE GEAR	SEE NOTE	2
07	4	PINION THRUST WASHER	SEE NOTE	3
08	1	DIFFERENTIAL CASE	013121SP	
09	1	COUNTERSUNK SCREW (PK OF 2)	200213SP	
10	1	RETAINING PIN (PK OF 4)	120601SP	
11	-	TAPERED ROLLER BEARING	NOT SUPPLIED	4
12	1	SEAL HOUSING BRACKET	220223	
13	1	SEAL HOUSING KIT	081828SP	
14	1	SEAL HOUSING O-RINGS (PK OF 2)	160248-2	1
15	1	TAPERED ROLLER BEARING	160116	4
16	1	BONDED SEAL	160701SP	
17	1	SPLINED SIDE GEAR	SEE NOTE	2
18	2	SIDE GEAR THRUST WASHER	SEE NOTE	3
19	4	PINION GEAR	SEE NOTE	2
20	1	SPIDER BLOCK	070503SP	
*	1	SHIM KIT	SHK008	
*	1	BULKHEAD FITTING KIT (BANJO TYPE)	170114	
*	1	AIR LINE (6mm DIA X 6m LONG)	170314SP	
*	1	SOLENOID VALVE (12V)	180103	
*	1	SWITCH RR LOCKER	180224	
*	1	CABLE TIE (PK OF 25)	180305	
*	1	OPERATING & SERVICE MANUAL	210200	
*	1	INSTALLATION GUIDE	2102245	

* *Not illustrated in exploded view*

NOTES

- 1 For replacement O-rings use only BS140 Viton 75.
- 2 Available only as complete 6 gear set # 728J101
- 3 Available only as complete thrust washer kit #730J01
- 4 This differential uses 2 different sized carrier bearings – Timken 32010X (ARB #160116) on the Flange Cap side, and Timken LM603049-LM603012 on the Case side.

EXPLODED DIAGRAM**SPECIFICATIONS**

Axle Spline	29 tooth, Ø31.5mm [1.24"]
Ratio Supported	All
Ring Gear ID	121.3mm [4.776"]
Ring Gear OD	200.00mm [7.874"]
Ring Gear Bolts	10 bolts on Ø145.5mm [5.728"]
Ring Gear Torque	180Nm [132 ft-lb]
Backlash	0.12-0.18mm [0.003-0.005"]
Bearing Cap Torque	80Nm [59 ft-lb]

ARB Corporation Ltd • 42-44 Garden St Kilsyth VIC 3137 Australia
ARB 4X4 Accessories USA • 720 SW 34th St Renton WA 98057 USA
Australia & International Customer Service • +61 3 9761 6622
North America Customer Service • Toll Free 866 293 9078
www.arb.com.au (AUS & Int) www.arbusa.com (N. America)